

# DATA SHEET

## Three Phase Induction Motor - Squirrel Cage



Customer :

Product line : ODP NEMA Premium Efficiency Three-Phase Product code : 11099303  
Catalog # : 10012OT3E444T

Frame	: 444/5T	Locked rotor time	: 32s (cold) 18s (hot)
Output	: 100 HP (75 kW)	Temperature rise	: 105 K
Poles	: 6	Duty cycle	: Cont.(S1)
Frequency	: 60 Hz	Ambient temperature	: -20°C to +40°C
Rated voltage	: 208-230/460 V	Altitude	: 1000 m.a.s.l.
Rated current	: 276-250/125 A	Protection degree	: IP23
L. R. Amperes	: 1576-1425/713 A	Cooling method	: IC01 - ODP
LRC	: 5.7x(Code G)	Mounting	: F-1
No load current	: 96.6-112/56.0 A	Rotation <sup>1</sup>	: Both (CW and CCW)
Rated speed	: 1190 rpm	Noise level <sup>2</sup>	: 77.0 dB(A)
Slip	: 0.83 %	Starting method	: Direct On Line
Rated torque	: 60.2 kgfm	Approx. weight <sup>3</sup>	: 612 kg
Locked rotor torque	: 210 %		
Breakdown torque	: 240 %		
Insulation class	: F		
Service factor	: 1.15		
Moment of inertia (J)	: 1.85 kgm <sup>2</sup>		
Design	: B		

Output	25%	50%	75%	100%	Foundation loads	
Efficiency (%)	94.4	94.5	95.0	95.0	Max. traction	: 1169 kgf
Power Factor	0.38	0.62	0.74	0.79	Max. compression	: 1780 kgf

		<u>Drive end</u>	<u>Non drive end</u>
Bearing type	:	6319 C3	6316 C3
Sealing	:	Without Bearing Seal	Without Bearing Seal
Lubrication interval	:	20000 h	20000 h
Lubricant amount	:	45 g	34 g
Lubricant type	:	Mobil Polyrex EM	

### Notes

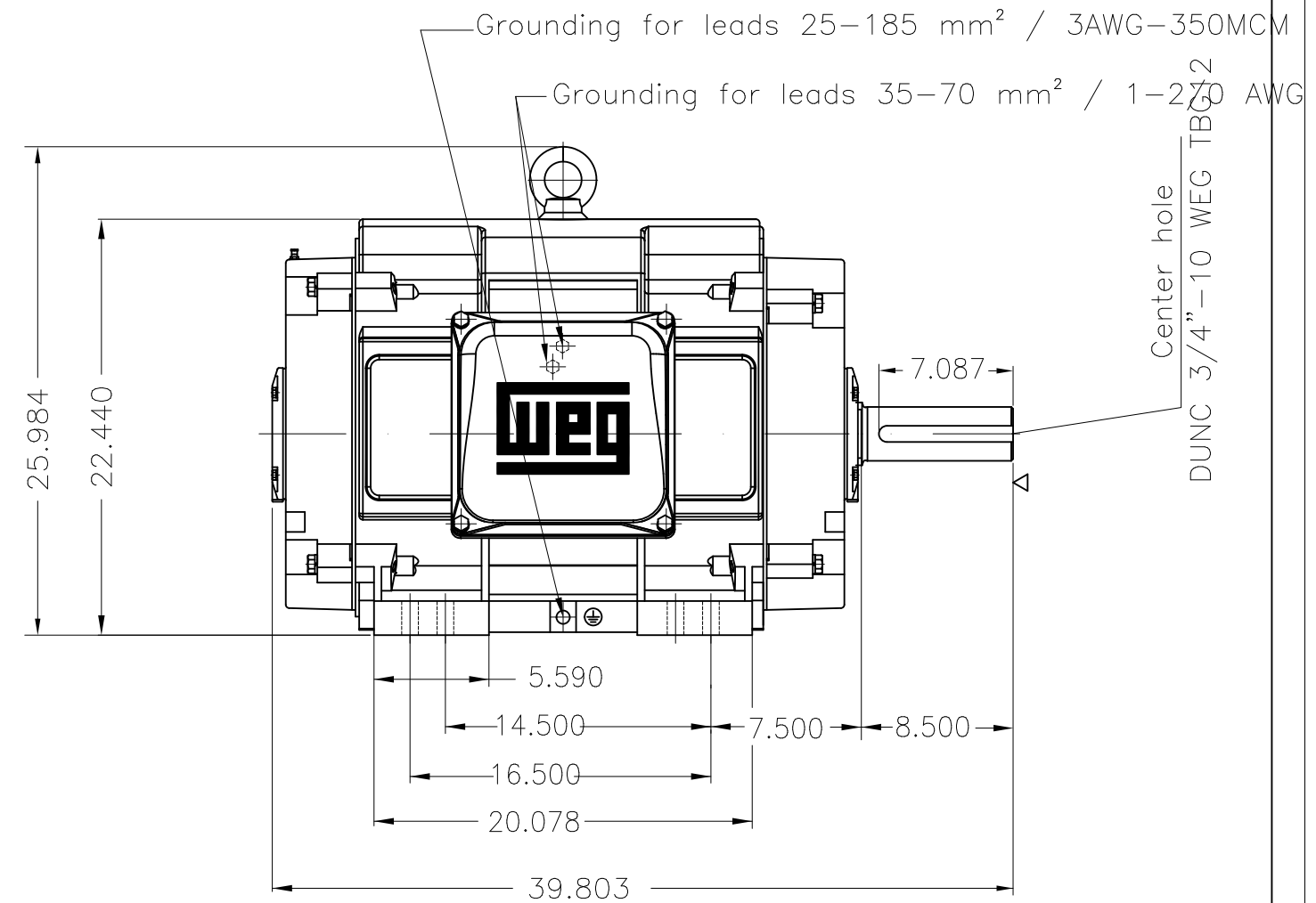
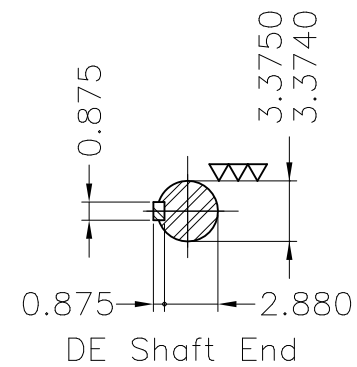
This revision replaces and cancel the previous one, which must be eliminated.

- (1) Looking the motor from the shaft end.
- (2) Measured at 1m and with tolerance of +3dB(A).
- (3) Approximate weight subject to changes after manufacturing process.
- (4) At 100% of full load.

These are average values based on tests with sinusoidal power supply, subject to the tolerances stipulated in NEMA MG-1.

Rev.	Changes Summary	Performed	Checked	Date
Performed by		Page Revision 1 / 1		
Checked by				
Date	06/04/2019			

THIS IS AN UPDATED REVISION, THE  
PREVIOUS ONE MUST BE DISREGARDED.

[illegible]